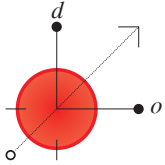


**CONFERRING TABLES**



Tables are available with an "X" base, "T" base and a double "T" base for 42" wide tables. An optional Arc base is available in all styles. Leveling glides are furnished and the bases have a textured powder coat finish. A folding option is available except on 42" deep and "X" base. Gangclamps are available to join tables together. See June, 2004 price list, page 66.

**PRICE**

<b>PART #</b>	<b>BASE</b>	<b>T-MOLD</b>	<b>DESIGN FORM</b>	<b>Options</b>
2460TBL	Single	\$633	\$791	FOLDING, Add \$371
3060TBL	Single	\$660	\$826	Folding Option N/A On * Items
3660TBL	Single	\$692	\$865	AR = Arc, Add \$69
				GC = 1 Gangclamp, Add \$80
2472TBL	Single	\$655	\$819	Tops Ship Standard as rectangles. Add suffix:
3072TBL	Single	\$688	\$860	BT = Boat
3672TBL	Single	\$729	\$912	RT = Racetrack
4272TBL*	Double	\$1083	\$1355	
3084TBL	Single	\$738	\$922	
3684TBL	Single	\$915	\$1144	
4284TBL*	Double	\$1151	\$1439	
3096TBL	Single	\$842	\$1053	
3696TBL	Single	\$969	\$1212	
4296TBL*	Double	\$1193	\$1490	
36D*	22" Base	\$669	\$836	Specify: SQ = Square
42D*	26" Base	\$863	\$1079	RD = Round
				CV = Clover

DESIGN OPTIONS

Post Office Box 151777  
Tampa, Florida  
33684

VOICE  
**813.885.4950**

WATS  
**877.800.3560**

FACSIMILE  
**813.885.2994**

WEB SITE  
**www.designoptions.com**