



Access Configurator

The Access Configurator software has been developed to provide a unique method of assisting with the design, configuration and layout of the Access cabinet product line.

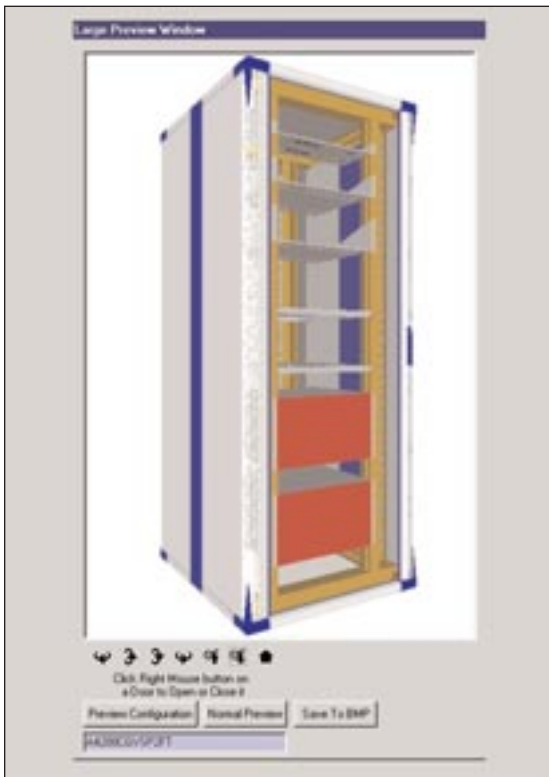
This configurator allows the designer and user to construct a cabinet to their own specification by using a building block approach to select cabinet components from the many options available.

Once you build your 'virtual cabinet', you are able to visualize the design by using a fully interactive 3D model. A snapshot of the model can then be saved as an image file for use in quotation or for later reference.

The software includes a library of standard accessories that can be placed into a mounting rail layout screen, which provides a useful equipment 'U position' layout guide. This layout can then be displayed in the 3D model giving an excellent visualization of a populated cabinet.

As well as providing a detailed breakdown of each component selected, this software also constructs an associated and convenient master part list with a full description for each item. This information can then be read by the report generator to provide a detailed quote or customer inquiry complete with images previously created in the configuration screen.

Once a configuration is finished, it can be easily stored and retrieved as a project file. There is also a useful contact database for storing client information.



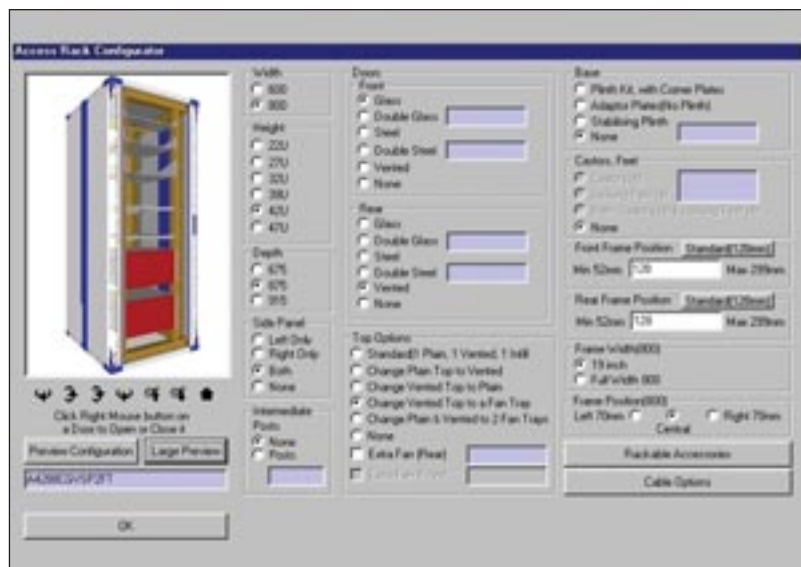
A unique design tool that provides assistance with:

- Cabinet configuration
- Cabinet layout
- Visualization of final built cabinet
- Quotations
- Allows for custom cabinets to be built to specification
- Equipment and accessories can be shown in position
- Final cabinet image can be viewed on screen
- Image can be saved to file
- View orientation can be modified

Main configuration screen showing cabinet options.

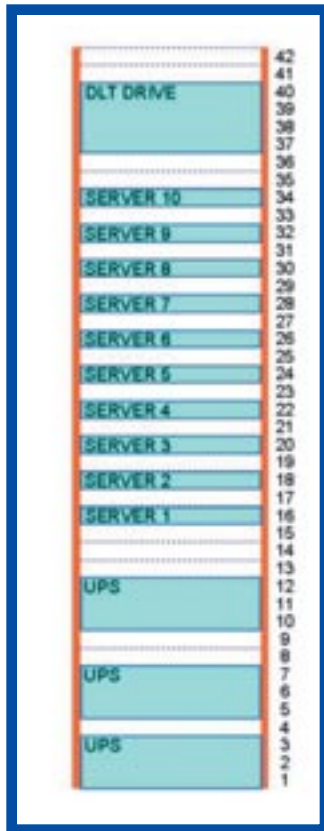
Once the selection is made, the final results are displayed in the interactive 3D model shown at right.

Configured image can be used in quotation or other documentation.



Access Configurator

Screen shot showing master part number and accessories chosen in cabinet configuration



Screen shot showing how hardware and accessories can be placed into the cabinet layout utility

Code	Description
A4761A1NGVPP3QA	Access Rack, 47U high, 23.62" wide, 39.37" deep, Frame with Universal Corner Plates, 19" EIA Piercing for Cage Nuts, Glass Front Door (Hinged Left), Vented Rear Door
SAMP61A	Stabilising Plinth 23.62" w x 39.37" d x 3.94" h (Light Gray Steel)
ACK	Castors (set of 4)
ABS4715	Cable basket trunking 47U High, 5.91" wide, Centre Left
ABS4715	Cable basket trunking 47U High, 5.91" wide, Centre Right
E2SHP1900	4 Point fixed shelf 19" EIA and 30" deep
VPS701512L	Vertical power strip, 15 amp, 12 port, locking plug.

System Requirements

Operating System Software:

- Windows 95 or later
- Window NT 4.0

Minimum Hardware Configuration:

- Pentium MMX 233
- 128mb of RAM
- Video card capable of a resolution of 800x600 in high color
- Sound card (optional)
- Mouse

Recommended Hardware Configuration:

- Pentium II or faster
- 128mb of RAM
- 32MB NVIDIA TNT/TNT2/GEFORCE video card
- Sound card (optional)
- Mouse



Rendering showing the above configuration in 3D form